



17 Skylark Fields, Nuneaton, CV10 0GE  
£240,000



## ENTRANCE HALL

Stairs to first floor, tiled flooring

## LIVING ROOM 16'8" x 11'9" (5.1 x 3.6)

Double glazed window to front aspect, lvt flooring

## CLOAKROOM WC

Low level wc, wash hand basin, tiled splashbacks

## KITCHEN DINING ROOM 10'2" x 8'10" (3.1 x 2.7)

Double glazed doors to rear gardens, fitted with matching floor and wall units with work surfaces over, integrated and free standing appliances, tiled flooring, dining space

## FIRST FLOOR LANDING

Loft access, carpet flooring

## BEDROOM 11'1" x 10'5" (3.4 x 3.2)

Double glazed window, carpet flooring

## BEDROOM 6'10" x 6'2" (2.1 x 1.9)

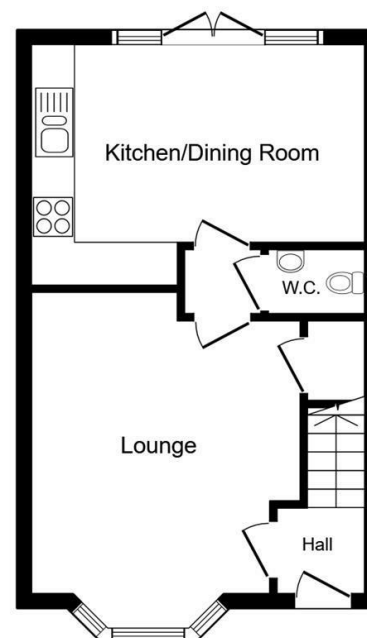
Double glazed window, carpet flooring

## BATHROOM

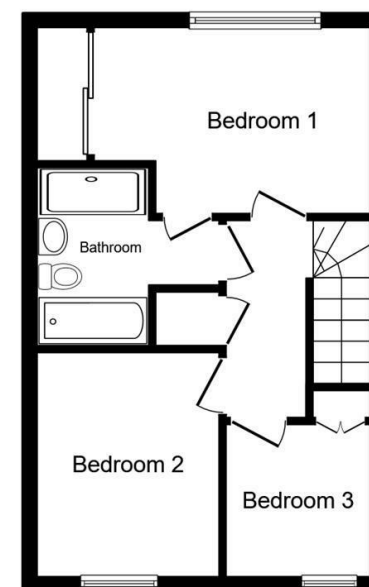
Matching white bathroom suite with tiled surrounds

## OUTSIDE

Fully enclosed rear gardens, large patio area, gated rear access. Allocated parking to the front of the property



Ground Floor



First Floor